



TIRE SERVICE INTERNATIONAL

350B Back Buddy II™

buyTSI.com - 800.223.4540



Read this manual before operating

Tire Service International, LLC

3451 S. 40TH ST.
Phoenix, AZ 85040

Office: 602.437.5020
Email: sales@buytsi.com
Fax: 602.437.5025

Contact us for any assistance

800.223.4540

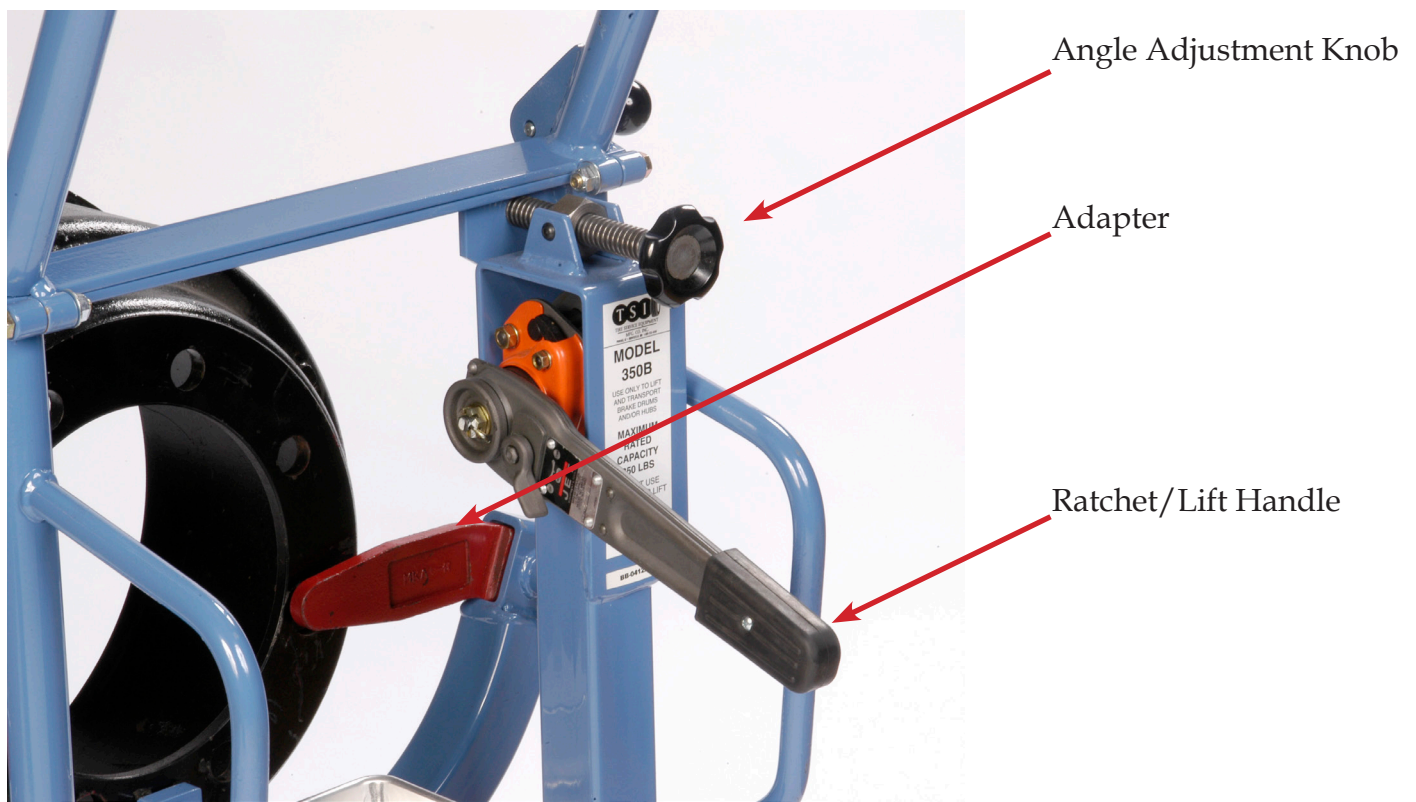
Revised: March 2024

Safety Requirements

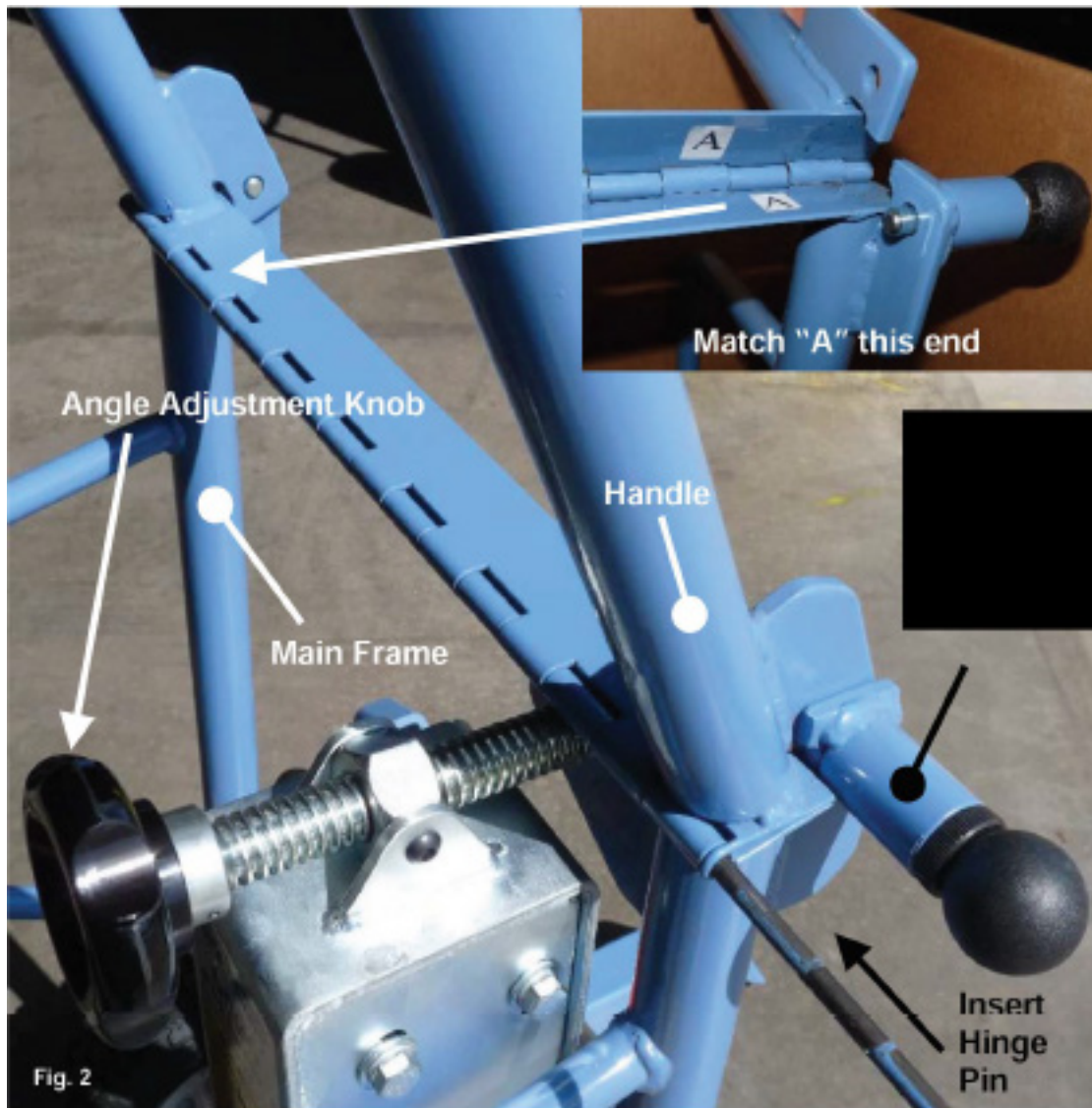
1. Read and follow instructions for optimum use
2. Steel toe shoes, safety glasses and gloves are recommended
3. Be sure handle locks are secure before moving load.
4. Keep the handle and knobs free of grease.
5. Be sure to stay below the lift capacity of 350 lbs.

General Information

1. The 350B Back Buddy II™ is designed to reduce fatigue and injury during brake and bearing seal maintenance on vehicles. Lift capacity is 350 lbs.
2. 48" tall x 27" wide and 27 1/2" deep. Freestanding weight just over 100 lbs and is very easy to handle and maneuver.
3. The 350B Back Buddy II™ can handle all hub and drum assemblies with the universal receiver and adapter sets. With a simple change of adapters users of the Back Buddy II™ can change from an inboard hub/drum lifting device to an outboard drum or spoke lifting device in seconds.
4. Changing adapters is as easy as pulling the knob of the spring loaded lock/locking pin, removing the existing adapter and replace it with another adapter.

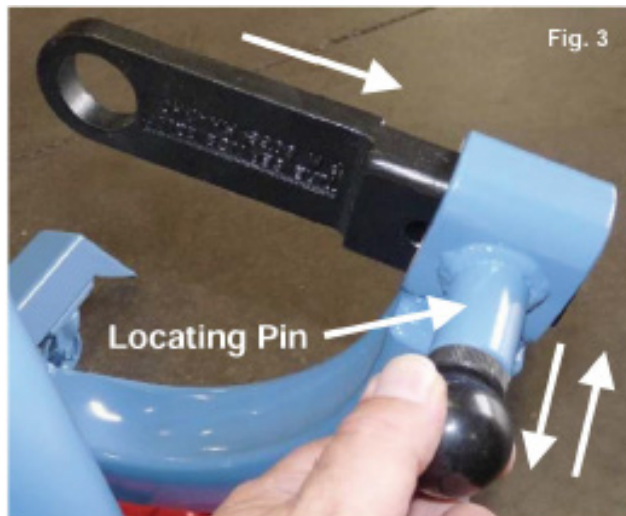


Set-Up Instructions

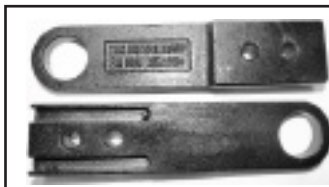


1. Figure 2 above shows a Back Buddy II™ with a handle nearly installed.
2. The inset at top right indicates where to match "A" for proper assembly. Line up the handle and align the locking tabs. The handle "locking tabs" go on the inside of the main frame tabs. You may want to temporarily fasten these together using the handle lock pin.
3. Line up the hinge halves and insert hinge pin and cotter pins.
4. Prior to shipping each Back Buddy II™ unit has been fully assembled. It may be necessary to gently tap the hinge pin into place. DO NOT BEND IT.

Operating Instruction



1. Roll the Back Buddy II™ up to the hub.
2. Select the correct adapter and fasten it into position (See Fig. 3 and 4). Insert the adapter with the grooves on the adapter facing away from unit.
3. Align the Back Buddy II™ to the hub. Turn the angle adjust knob. (Fig. 2) in or out.
4. Make sure the pin locks the adapter in the receiver.
5. Below are two standard adapters sent with each Back Buddy II™ unit.



MKA2/2H - TSI #6069
10 stud inboard hubs. Studs 335 mm on center.



MKA3/3HD - TSI #6073
10 stud outboard hubs. Studs 11.25" on center, 3/4" hub back plate thickness.



6. Figure 4 shows an operator has fastened the Back Buddy II™ to a hub.
7. The arrows point to the lift ratchet and the angle adjustment knob. Use both to align the unit to your vehicle hub.

Operating Instruction

9. Ensure ratchet handle is stowed before laying it down on its back.

10. Tip the Back Buddy II™ back to service brake drum.

11. The pull handles in back are angled to rest the unit on its back without crushing or pinching your fingers as you use the upper hand to pivot it with. See Fig. 6



Fig. 6

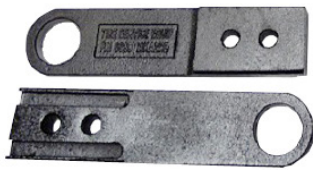
Tip it forward to service the hub as shown.



Repair Parts List

| Item | Description | Qty |
|--------|----------------------------|-----|
| 72.107 | Bearing, Ball .5 x 1.125 | 4 |
| 11719 | Bearing, Cam Follower | 4 |
| 11712 | Handle, 5-lobe | 1 |
| 11629 | Pin, Pop Spring | 4 |
| 11679 | Roller, Slider Box - Short | 4 |
| 11625 | Wheel and Tire | 2 |
| 11662 | Winch, Ratchet | 1 |

Adapter List



MKA2



MKA3



MKA4



MKA5



MKA6



MKA7



MKA8



MKH MV

TSI#6069 - MKA2/2HD

Interchangeable left or right. Adapters connect directly to studs, 10 stud inboard hubs. Studs 335 mm on center.

TSI #6073 - MKA3/3HD

One right and one left. Adapters connect directly to brake drum, 10 stud outboard hubs. Studs 11.25" on center, 3/4" hub back plate thickness.

TSI #6071 - MKA4

One right and one left. Adapters connect directly to stud on a 5 spoke hub and drum. Same adapters are inverted for use on a 6 spoke hub and drum.

TSI #6074 - MKA5

One right and one left. Adapters connect directly to studs, 8 stud inboard hub. Studs 275 mm on center.

TSI #6075 - MKA6

One right and one left. Adapters connect directly to brake drum, 8 stud outboard drum. Studs 275 mm on center with 1/2" hub back plate thickness.

TSI #6076 - MKA7

One right and one left. Adapters connect directly to studs, 6 stud inboard hub. Studs 8 3/4" on center.

TSI #6077 - MKA8

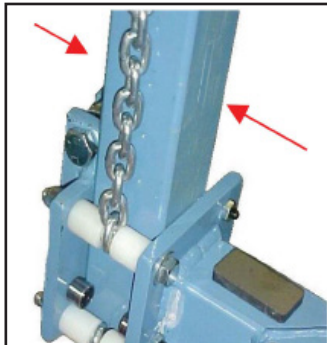
One right and one left. Adapters connect directly to brake drum, 6 hole outboard drum. Studs are 8 3/4" on center with 1/2" hub back plate thickness.

TSI #6067 - MKH MV

Only one required. Adapter connects directly to studs, 8 stud inboard hubs. Studs are 6 1/2" on center for Hummer/Humvee geared hubs.

Maintenance

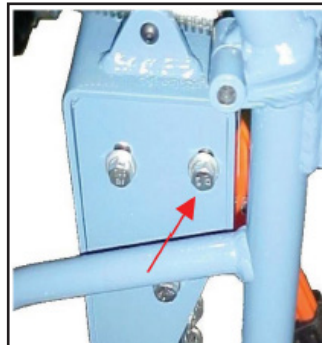
The maintenance recommendations on this product are on an as needed basis. Under normal use it is advisable to periodically check for loose bolts, knobs the ratchet chain and rollers and tighten them when necessary.



Apply grease on square tube where shown.

Tighten round knobs if loose.

Snug all other bolts as needed.



To adjust ratchet chain, loosen bolts and lift on ratchet and re-tighten the bolts.

The ratchet needs periodic adjustment for trouble-free operation.



Remove the cotter pin by carefully bending it up as it slides out of the nut.

It is very important to have the tab on the right side of the slot as shown.



Unscrew the nut and remove it and the washer.

It is also important to seat the gear so there is no gap. If not seated correctly in the slot, it will show a gap at the arrow.



Tighten the base clockwise. This should only be finger tight. Do not over tighten.

Place the washer and nut on. Tighten slightly with fingers. Insert the cotter pin.



California Proposition 65

California's Proposition 65 entitles California consumers to special warnings for products that contain chemicals known to the state of California to cause cancer and birth defects or other reproductive harm if those products expose consumers to such chemicals above certain threshold levels.

WARNING: Some of Tire Service International's products can expose you to chemicals including chromium compounds, which are known to the State of California to cause cancer, birth defects or other reproductive harm. For more information, go to www.P65Warnings.ca.gov.

Your risk from exposure to these chemicals varies, depending on exposure time. To reduce your exposure, work in a well-ventilated area and with approved safety equipment, such as dust masks that are specially designed to filter out microscopic particles. Wash your hands after touching TSI's products.

Warranty and Return Policy

Warranty & Workmanship you can depend on.

With over 30 years of manufacturing experience we maintain the ability to provide competitive prices while employing and manufacturing the majority of our products in the USA. Pride in our workmanship and standing behind each and every product is not just our claim but our uncompromising responsibility.

Tire Service International equipment is warranted to be free from defects in materials and workmanship for a period of one year from the date of original purchase to the original owner. Repair labor is warranted for 90 days from the date of original purchase. Bushings, blades, bearings and normal wear and tear are not covered under warranty. Careless handling, negligence, misuse, abuse, mutilation, improper operation, making unauthorized repairs, additions, and or alterations automatically cancel this warranty and relieves TSI of any obligation. Cheetah tanks claimed to be defective while under warranty will be evaluated at our manufacturing plant and either repaired if possible or exchanged and returned or credit issued to the customer account at our discretion. Damage resulting from dropping the tanks will not receive warranty consideration. Warranty parts need to be returned prepaid to the plant for credit. Any replacement parts shipped from the plant will be shipped at the customer's expense. Machines requiring warranty work must be brought to the manufacturing plant in 201 Chelsea Rd, Monticello, MN or to a repair facility authorized by TSI.

!!WARNING!! Goods returned without an RGA will be refused. A Returned Goods Authorization form must be obtained before returning any material or goods. All non-warranty returns will be subject to a 15% restocking fee plus any additional charges for reconditioning/repacking.

Visit www.buyTSI.com for any additional information. Also be sure to follow us on all the Socials, and subscribe to our YouTube channel for all our product videos.

No part of this manual may be reproduced without specific approval from
Tire Service International, LLC.

Copyright © 2024 Tire Service International, LLC

