



TIRE SERVICE INTERNATIONAL

TW2000 Tweel Handler

buyTSI.com - 800.223.4540



READ INSTRUCTIONS THOROUGHLY BEFORE OPERATING

Tire Service International, LLC

3451 S. 40TH ST.
Phoenix, AZ 85040

Office: 602.437.5020
Email: sales@buytsi.com
Fax: 602.437.5025

Contact us for any assistance

800.223.4540

Revised: March 2024

General Description

The TW2000 Tweel Handler™ is an amazingly versatile tool that allows truck mechanics to remove, install, rotate and transport single tire-and-wheel assemblies with ease. The TW2000 has a built-in ratcheting jack with 14" of vertical travel. The Tweel Handler's U-shaped chassis allows close work, with unhindered access to the tire in the cradle.

Safety Requirements

1. READ THIS MANUAL BEFORE OPERATING
2. WARNING - WEAR SAFETY GLASSES
3. PUSH THE WHEEL LOCK DOWN INTO THE LOCK POSITION BEFORE LIFTING THE TIRE.

Set-Up Instruction

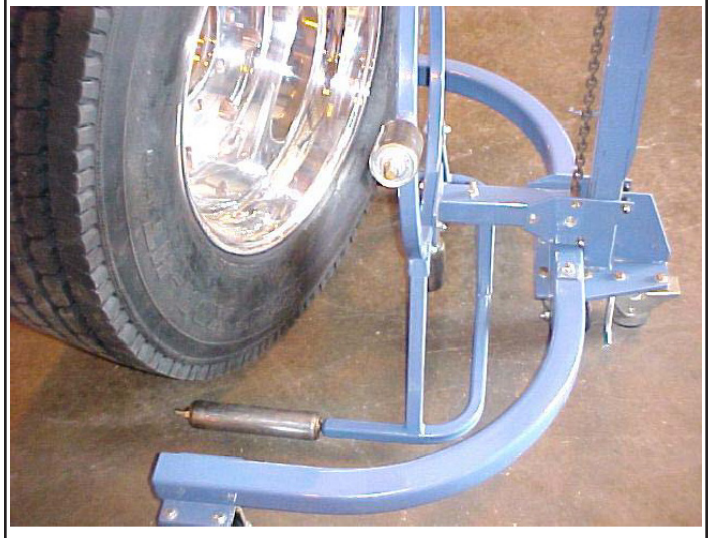
1. Remove machine from packaging materials.
2. Use unit on a clean, level surface with adequate room to maneuver and make necessary adjustments to the machine as it is being used.

Operating Instruction

Lower Jack to lowest setting just above ground level.



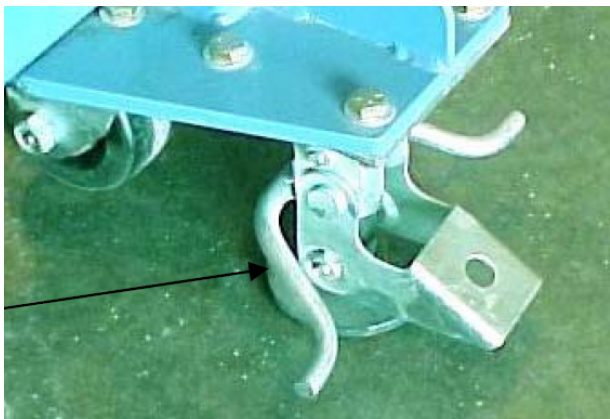
Align the Tweel handler into position under tire.



Operating Instruction

Push Floor lock down to lock in place.

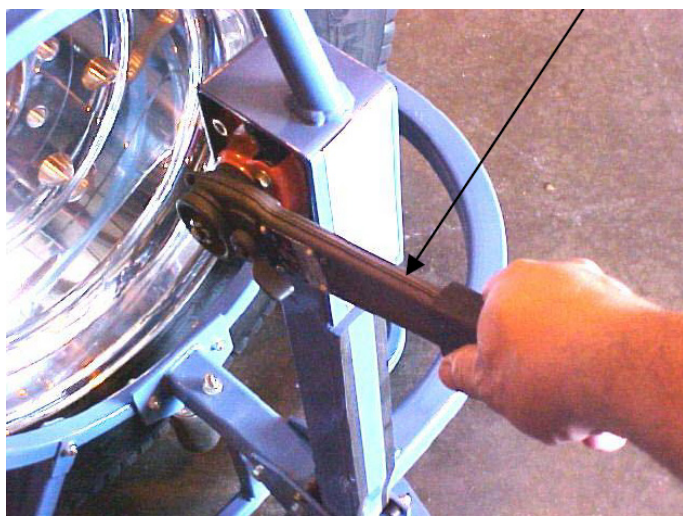
****NOTE FOR SAFETY REASONS PUSH THE WHEEL LOCK DOWN INTO THE LOCK POSITION BEFORE LIFTING THE TIRE.**



For safe handling make sure tire is touching all rollers.



Raise the ratcheting jack to lift the tire as shown.



Once tire is in the raised position you can inspect, rotate and transport tire to your desired location using the handle.

**** Before transporting tire, release Floor Lock on rear caster**



California Proposition 65

California's Proposition 65 entitles California consumers to special warnings for products that contain chemicals known to the state of California to cause cancer and birth defects or other reproductive harm if those products expose consumers to such chemicals above certain threshold levels.

WARNING: Some of Tire Service International's products can expose you to chemicals including chromium compounds, which are known to the State of California to cause cancer, birth defects or other reproductive harm. For more information, go to www.P65Warnings.ca.gov.

Your risk from exposure to these chemicals varies, depending on exposure time. To reduce your exposure, work in a well-ventilated area and with approved safety equipment, such as dust masks that are specially designed to filter out microscopic particles. Wash your hands after touching TSI's products.

Warranty and Return Policy

Warranty & Workmanship you can depend on.

With over 30 years of manufacturing experience we maintain the ability to provide competitive prices while employing and manufacturing the majority of our products in the USA. Pride in our workmanship and standing behind each and every product is not just our claim but our uncompromising responsibility.

Tire Service International equipment is warranted to be free from defects in materials and workmanship for a period of one year from the date of original purchase to the original owner. Repair labor is warranted for 90 days from the date of original purchase. Bushings, blades, bearings and normal wear and tear are not covered under warranty. Careless handling, negligence, misuse, abuse, mutilation, improper operation, making unauthorized repairs, additions, and or alterations automatically cancel this warranty and relieves TSI of any obligation. Cheetah tanks claimed to be defective while under warranty will be evaluated at our manufacturing plant and either repaired if possible or exchanged and returned or credit issued to the customer account at our discretion. Damage resulting from dropping the tanks will not receive warranty consideration. Warranty parts need to be returned prepaid to the plant for credit. Any replacement parts shipped from the plant will be shipped at the customer's expense. Machines requiring warranty work must be brought to the manufacturing plant in 201 Chelsea Rd, Monticello, MN or to a repair facility authorized by TSI.

!!WARNING!! Goods returned without an RGA will be refused. A Returned Goods Authorization form must be obtained before returning any material or goods. All non-warranty returns will be subject to a 15% restocking fee plus any additional charges for reconditioning/repacking.

Visit www.buyTSI.com for any additional information. Also be sure to follow us on all the Socials, and subscribe to our YouTube channel for all our product videos.

No part of this manual may be reproduced without specific approval from
Tire Service International, LLC.

Copyright © 2024 Tire Service International, LLC

