



TIRE SERVICE INTERNATIONAL

Cheetah® Bead Seater
CH-5 & FCH-5 & CH-10
Includes AL & CRN models

buyTSI.com - 800.223.4540



MADE IN TAIWAN

Read this manual before operating

Tire Service International, LLC

3451 S. 40TH ST.
Phoenix, AZ 85040

Office: 602.437.5020
Email: sales@buytsi.com
Fax: 602.437.5025

Contact us for any assistance

800.223.4540

Revised: March 2024

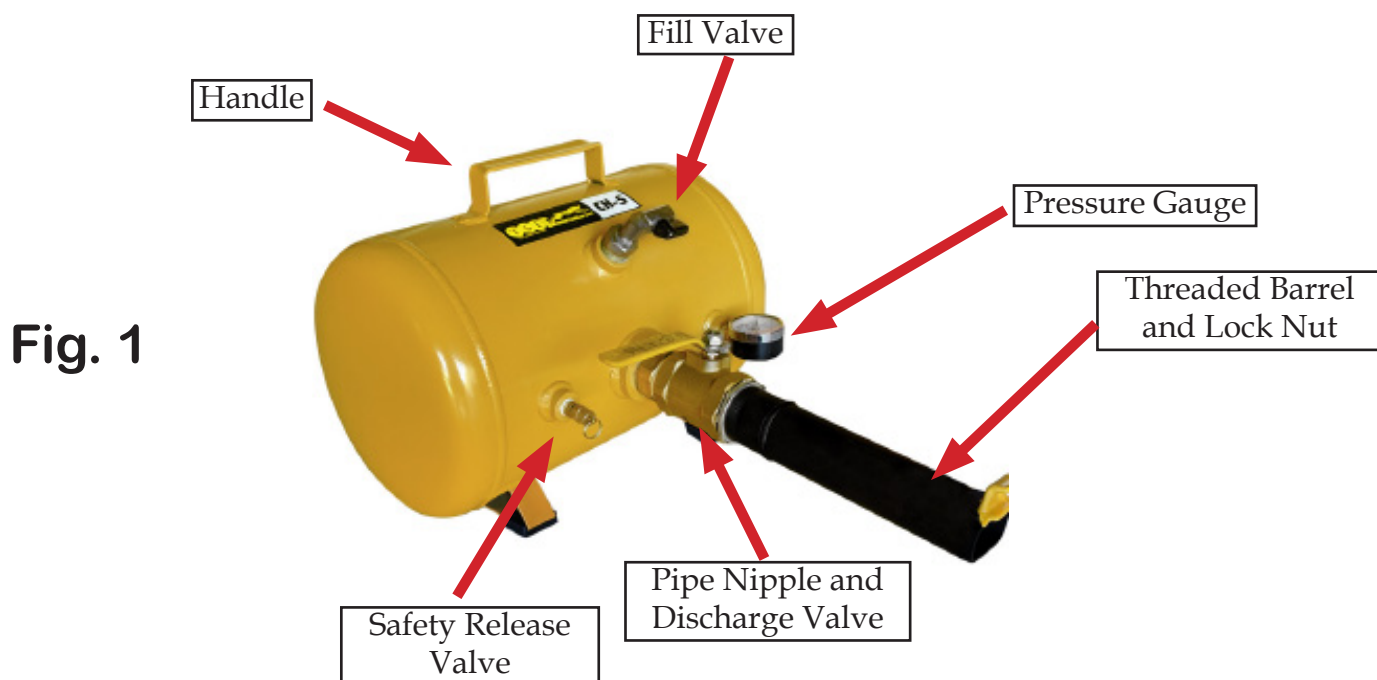
Overview

The CH-5 Cheetah® Bead Seater accommodates wheels from 4" to 24.5". This includes passenger and light truck tires and most commercial truck tires.

The CH-10 Cheetah® Bead Seater accommodates passenger and light truck tires, commercial truck and some implement tires.

Safety Instructions

- **WARNING: CHEETAH® TANKS BLAST AIR AT A HIGH RATE.**
- Personal Protective Equipment (Safety goggles, gloves, non-skid shoes and hearing protection are suggested).
- **NEVER TRANSPORT OR STORE A CHARGED TANK** - Accidental discharge could cause serious injury or damage
- Use proper body positioning.
- Always keep work clean, uncluttered, and well lit. Do Not work on a slippery floor surface.
- Keep bystanders out of the work area while operating.
- Never point an air tool at people or animals.
- Detach from air supply and release all air pressure before installing, removing or adjusting any accessory on this tool or performing maintenance. Failure to do so could result in injury.
- Do not open the Cheetah® Bead Seater air release valve when connecting the air supply hose. When the Cheetah® Bead Seater is not in use, discharge air from tank. Store with valve open in a clean, dry location.
- If the unit appears damaged in any way, is missing parts, or operates abnormally, it shall be removed from service immediately. All units that have been dropped, impacted suddenly, or dented should be removed from service

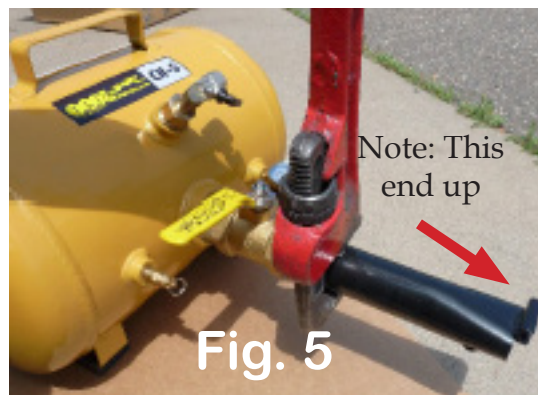


Setup Instructions

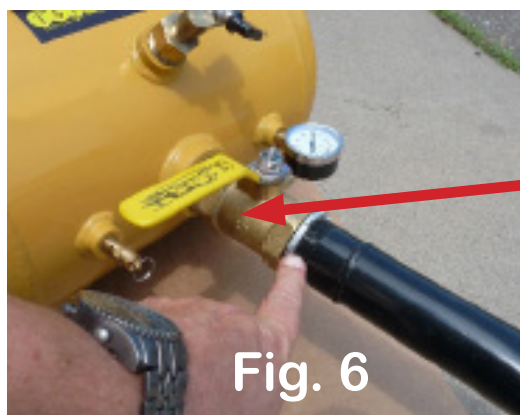
Verify receiving all the parts described in this instruction. Assemble as shown in Fig. 2 thru Fig 8.



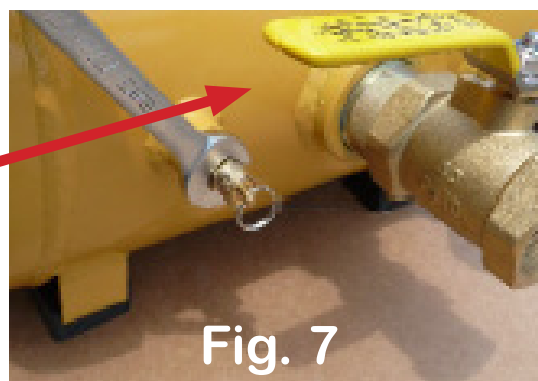
To install the discharge valve and threaded barrel use a large pipe wrench or a large socket wrench. Tighten so air doesn't leak out of the fitting. Use Teflon tape where applicable. Put some air in the tank and use soapy water to check fitting connections for air leaks. Tighten them as necessary.



In Fig. 6, tighten the lock nut ensuring the channel side of the threaded barrel is facing up as shown in Fig. 5. If the safety release valve in Fig 7. comes loose tighten it as shown. **WARNING: DO NOT REMOVE SAFETY RELEASE.** Excessive pressure could cause tank to rupture causing serious injury or death.



Note position of discharge valve handle.



Operational Instructions



If the pressure gauge becomes loose, tighten it with a wrench as shown in Fig. 8 and test for air leaks with soapy water.

IMPORTANT: Prepare each wheel by cleaning the rim. Dirt on the rim can create flying debris from the rush of air going into the tire.

TSI suggests using a quick-disconnect fitting (not included) on the air line to attach the air line to the valve stem. Remove valve stem core from wheel. Set aside to replace later after bead is seated.

Lubricate tire beads and rim flanges with approved tire lubricant.

As shown in Fig. 9 positioning a wheel on the tire stand to elevate both the tire and rim.

Connect the air hose to valve stem in Fig. 10. You may have to thread the air line through the rim center if the valve stem is facing the ground. In most cases, the wide flange of the wheel should be facing up.

The lower tire bead must be resting on the wheel bead-seat area. This alignment is very important to ensure the tire will capture the air blast within the tire cavity.

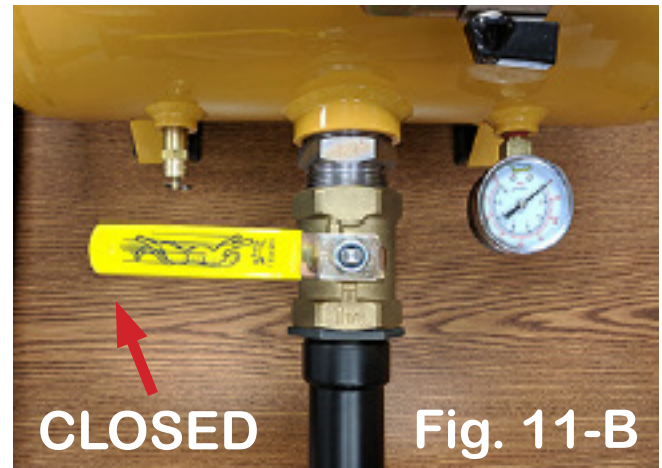
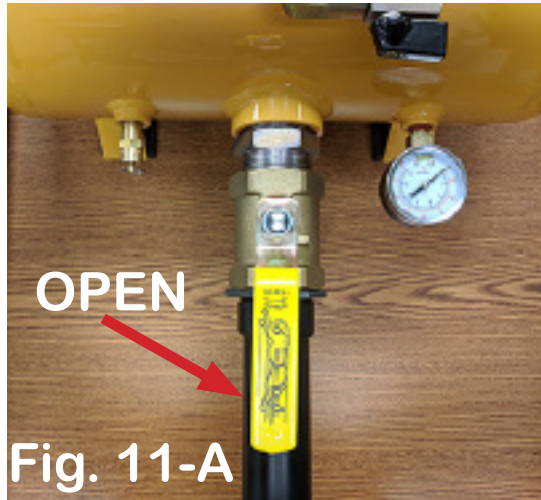
Now you are ready to seat the tire bead onto the rim.



Operational Instructions

NOTE: It is not always necessary to fill the tank to maximum pressure. The required pressure will vary depending on the size and type of tire. It is best to begin with lower pressure and work up to optimum pressure for your specific tire.

Never exceed 120 PSI (Safety release valve is set to 120 PSI).



Firmly hold Cheetah® tank as shown in Fig. 12. Lean forward slightly to hold it in position. Point the threaded barrel down into the tire as shown in Fig. 13. Usually this is a 45 degree angle, but will vary from one tire to another. Open valve on air hose.

Gather your footing, hold one hand onto the Cheetah® handle and the other on the discharge valve lever. Fully open the discharge valve lever quickly releasing all the air into the tire, lifting the bead. See Fig 11-A.

Once the bead fully moves into position close the air supply valve. Remove the hose locking chuck from the valve stem and replace valve stem core. With experience you will recognize filling the tank to capacity isn't necessary. The amount of air to seat the bead depends on the tire. Most tires can be seated between 40 PSI- 100 PSI. Several attempts to seat the bead may be necessary.

Make sure the valve stem core is firmly tightened in place. You are now ready to place the tire into a tire cage and proceed to inflate the tire to manufacturer's tire pressure requirements.

Check for leaks and if necessary repeat process. If none are present, place valve cap on valve stem and wipe off excess lubricant.



Maintenance

To ensure the highest level of performance and operator safety, each Cheetah® tank should be inspected regularly for signs of damage due to wear, accidental impact from drops or other shop wear and tear or storage conditions. Inspection of the tank both external/internal and replacement is the ideal approach to insure optimum user safety. Safety related input from our tank manufacturers suggest replacement after 5 years in service.

- **Daily:** Inspect the pressure gauge (Part# 01.106) and Safety Release Valve (Part #05.102). Visually inspect the exterior of the tank for rust or deterioration.
- **Monthly:** Pull the ring of the safety release valve to ensure the valve moves freely and isn't restricted.
- **Every six (6) months:** Visually inspect the interior of the tank for rust or deterioration by removing the discharge valve and threaded barrel. Shine a light into the tank to improve visibility.
- **Storage and Drain:** The Cheetah® should be stored by hanging from the handle with the valve open. This allows any moisture to drain from the tank when the Cheetah® is not in use. It also protects the barrel and other attachments on the Cheetah® from damage.
- Discontinue use of tanks should any of the maintenance items need service. Contact your Distributor or TSI at 800-223-4540 or 602-437-5020 for replacement parts or units.

The (5) year service is based upon safety related input from our tank manufacturer. Following the maintenance inspection protocol and good judgment of the user, should be the final determination of the unit's safety and need for replacement. Under NO circumstances should you use a tank with signs of deterioration, damage or malfunction safety valves or gauges.

Use genuine Cheetah® TSI replacement parts. Use of non-cheetah parts will void the warranty. Under no circumstances should items be welded or attached to the tank.

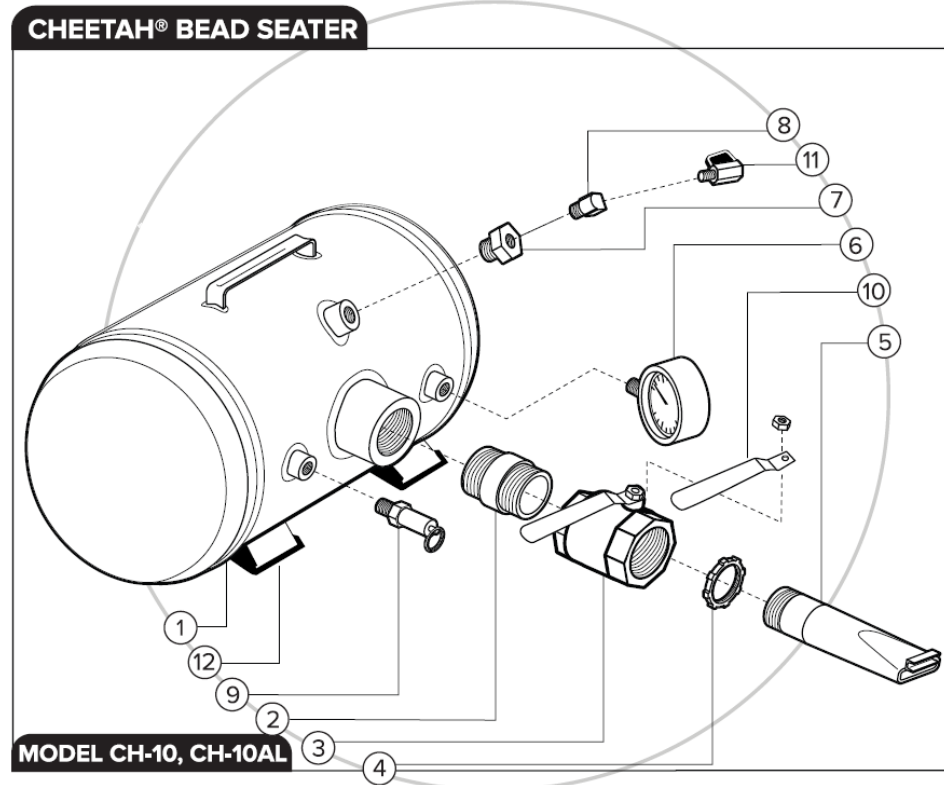
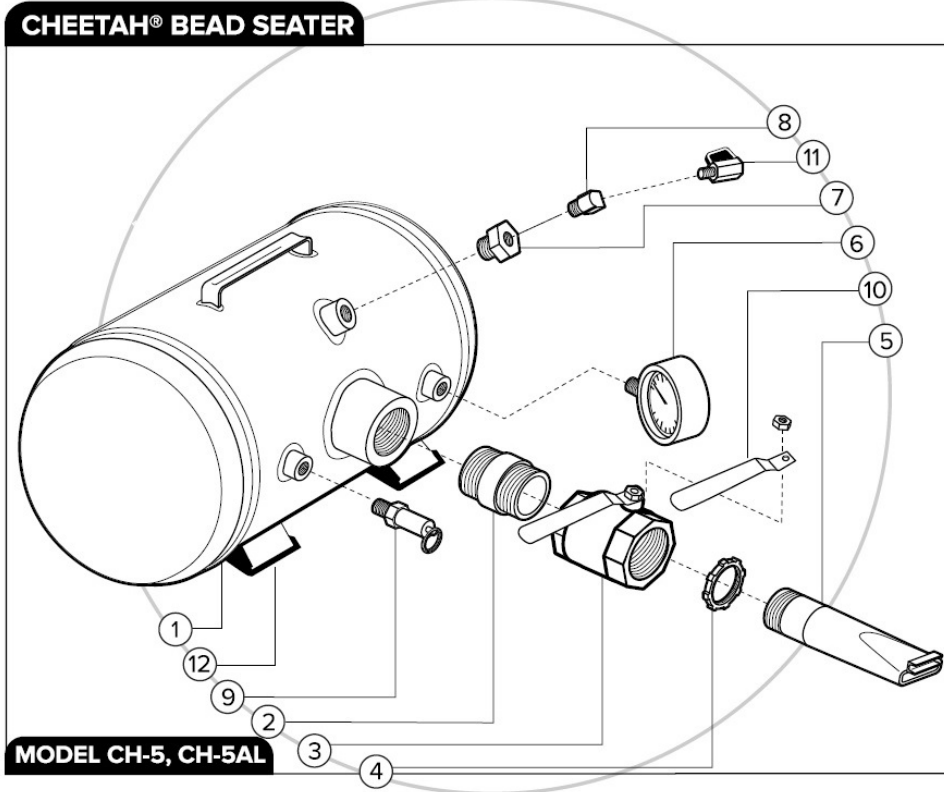
TSI Cheetah® warranty does not cover a dropped tank or damage resulting from dropping the unit. Any tank that has been dropped or shows sign of damage should be immediately removed from service.

Dimensions

Model	Length	Width	Height	Shipping Wt.
CH-5	18"	14"	14"	30 lbs
CH-5 AL	18"	14"	14"	18 lbs
CH-10	24"	16"	15"	46 lbs
CH-10 AL	24"	16"	15"	29 lbs

Notes

Notes



Notes

CH-5 Replacement Parts

ID	Item #	Description
2	01.104	Nipple 1.5"
3	02.102	Discharge Valve, CH-5
4	02.107	Lock Nut for CH-5 Barrel
5	02.103	Threaded Barrel, CH-5
6	01.106-200	Air Pressure Gauge 1/4 NPT 200 PSI
7	01.107	Reducer, Bushing 3/4 x 1/4
8	03.104	Elbow 1/4 NPT M x 1/4 NPT F x 90 Street Brass
9	05.102	Valve, Safety Release 120psi
10	01.230	Handle & Nut Only For Cheetah Discharge Valves
11	04.103	Valve, Ball Silver/Black
12	12607	Rubber Feet For Bead Seater
12	12608	Screw for Rubber Feet

CH-10 Replacement Parts

ID	Item #	Description
2	02.104	Nipple 2"
3	03.102	Discharge Valve, CH-10
4	03.107	Lock Nut for CH-10 Barrel
5	03.103	Threaded Barrel, CH-10
6	01.106-200	Air Pressure Gauge 1/4 NPT 200 PSI
7	01.107	Reducer, Bushing 3/4 x 1/4
8	03.104	Elbow 1/4 NPT M x 1/4 NPT F x 90 Street Brass
9	05.102	Valve, Safety Release 120psi
10	01.230	Handle & Nut Only For Cheetah Discharge Valves
11	04.103	Valve, Ball Silver/Black
12	12607	Rubber Feet For Bead Seater
12	12608	Screw for Rubber Feet

Optional Items

Difficult Wheels?

The magnum barrels provide optimum air dispersion for larger diameter wheels. The curved tube has holes in it for direct air flow into the tire



Magnum I (CH-5) Item #02.106



Magnum II (CH-10) Item #03.106

CH-ACC Kit



Tire Wedge Item #01.110



Tire Stand Item #01.111



Shelf Item #TI-87

JET PAK (Optional)

Faster and easier than standard ball or butterfly discharge valve operation. Attaches easily to existing pipe nipple, replacing manual discharge valve.

Discharges tank with the press of a button. Safety cover prevents accidental trigger release.

Includes our new improved Jet Barrel for greater air volume delivery.

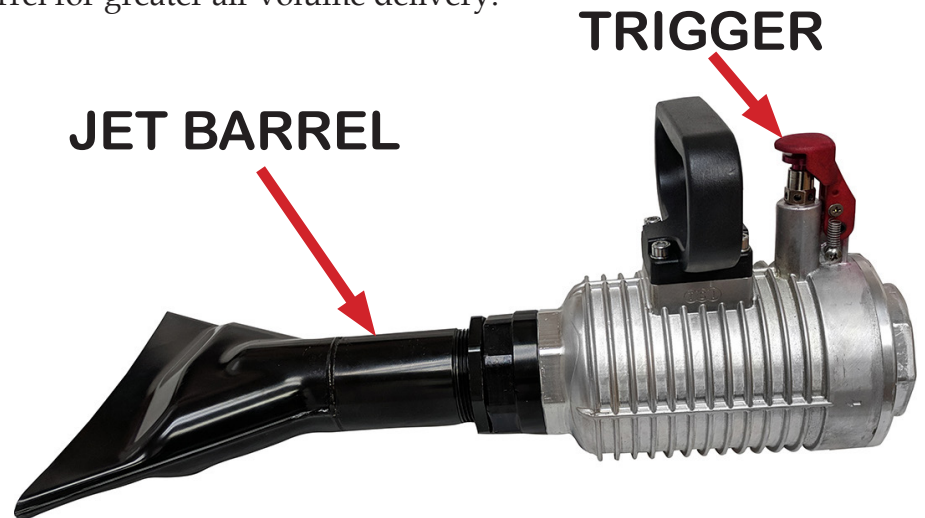
JET PAK INCLUDES:

Jet Barrel and Valve

Available:

CH1.5JP: 1.5" port size - CH-5

CH2.0JP: 2" port size - CH-10



Notes

California Proposition 65

California's Proposition 65 entitles California consumers to special warnings for products that contain chemicals known to the state of California to cause cancer and birth defects or other reproductive harm if those products expose consumers to such chemicals above certain threshold levels.

WARNING: Some of Tire Service International's products can expose you to chemicals including chromium compounds, which are known to the State of California to cause cancer, birth defects or other reproductive harm. For more information, go to www.P65Warnings.ca.gov.

Your risk from exposure to these chemicals varies, depending on exposure time. To reduce your exposure, work in a well-ventilated area and with approved safety equipment, such as dust masks that are specially designed to filter out microscopic particles. Wash your hands after touching TSI's products.

Warranty and Return Policy

Warranty & Workmanship you can depend on.

With over 30 years of manufacturing experience we maintain the ability to provide competitive prices while employing and manufacturing the majority of our products in the USA. Pride in our workmanship and standing behind each and every product is not just our claim but our uncompromising responsibility.

Tire Service International equipment is warranted to be free from defects in materials and workmanship for a period of one year from the date of original purchase to the original owner. Repair labor is warranted for 90 days from the date of original purchase. Bushings, blades, bearings and normal wear and tear are not covered under warranty. Careless handling, negligence, misuse, abuse, mutilation, improper operation, making unauthorized repairs, additions, and or alterations automatically cancel this warranty and relieves TSI of any obligation. Cheetah tanks claimed to be defective while under warranty will be evaluated at our manufacturing plant and either repaired if possible or exchanged and returned or credit issued to the customer account at our discretion. Damage resulting from dropping the tanks will not receive warranty consideration. Warranty parts need to be returned prepaid to the plant for credit. Any replacement parts shipped from the plant will be shipped at the customer's expense. Machines requiring warranty work must be brought to the manufacturing plant in 201 Chelsea Rd, Monticello, MN or to a repair facility authorized by TSI.

!!WARNING!! Goods returned without an RGA will be refused. A Returned Goods Authorization form must be obtained before returning any material or goods. All non-warranty returns will be subject to a 15% restocking fee plus any additional charges for reconditioning/repacking.

Visit www.buyTSI.com for any additional information. Also be sure to follow us on all the Socials, and subscribe to our YouTube channel for all our product videos.

No part of this manual may be reproduced without specific approval from
Tire Service International, LLC.

Copyright © 2024 Tire Service International, LLC

